



# IMAGERY BASEMAPS

## DATA SHEET



## Enhance your product and streamline your workflow with Maxar imagery basemaps

Imagery basemaps are the foundation for mapping our world. When you rely on map data to make decisions about your community or serve your customers, you need content that meets your requirements. Maxar's Vivid and Dynamic imagery basemaps feature our latest innovations in mosaicking, color balancing and image processing to provide stunning high-resolution, high-accuracy image layers available off the shelf or configured on demand.

Imagery basemaps provide a virtually seamless, consistent image layer over large areas to support mapping, visualization, and analytics. Spend less time processing data and more time executing your mission.

### Features and benefits

#### Vivid

- **Vivid Basic** offers a high quality basemap with basic-level specs, available for metros, countries or the global landmass.
- **Vivid Standard** offers 30 cm resolution and 5 m CE90 accuracy plus four spectral bands — raising the standard for mapping from city to global scale.
- **Vivid Advanced** offers predictable coverage for thousands of high-interest areas worldwide: a current, clear view of the ground.
- **Vivid Premium** offers the highest clarity and accuracy available with satellite imagery: 15 cm resolution and 2 m CE90 accuracy for major urban centers around the world.
- Vivid basemaps are available “off the shelf” with flexible access options for a solution that integrates seamlessly into your workflow.
- Annual basemap builds incorporate our latest image collections for a basemap that reflects reality.

#### Dynamic

- Available on demand for any area of interest.
- Configurable to meet specific requirements: Customers define the desired image start/end dates, product GSD and spatial accuracy.
- Customizable for projects that require a basemap engineered to unique specifications.
- Rapid processing for delivery within weeks.

### RELIABLE BASEMAPS TO MEET YOUR FOUNDATIONAL DATA NEEDS

At 30 cm resolution and 5 m CE90 globally, Maxar imagery basemaps offer the consistent clarity and accuracy needed to:

- Extract building and road features at large scale
- Provide reliable contextual layer
- Enable real-life immersive experience for visual simulation
- Monitor widespread change over long periods of time

### TOKYO, JAPAN



See across large areas with Vivid Standard (top), or focus on the activity in your city with Vivid Advanced (bottom).

# MAXAR

# Specifications

	VIVID BASIC <i>specs apply</i>	VIVID STANDARD <i>specs apply globally</i>	VIVID ADVANCED <i>specs apply per AOI</i>	VIVID PREMIUM <i>specs apply AOI</i>	DYNAMIC <i>specs apply AOI</i>
GSD	50 cm	30 cm	30 cm	15 cm	30 cm - 15 m
Accuracy	8.5 m CE90	5 m CE90	5 m CE90	2 m CE90	5 m or 10 m CE90
Image currency	<12 mo >40% <36 mo >75%	<12 mo >40% <36 mo >75%	<12 mo >50% (75% target)	<12 mo >50% (90% target)	Best available or custom
Cloud cover	<5%	<2%	<2% (0% target)	<1% (0% target)	<5% target or custom
Image bands	3-band RGB	3-band RGB or 4-band BGRN	3-band RGB	3-band RGB	3-band RGB or 4-band BGRN
Projection, datum	Geographic, WGS84	Geographic, WGS84	Geographic, WGS84	Geographic, WGS84	Geographic, WGS84 or custom
Off-Nadir Angle	0-30 degree	0-30 degree	0-30 degree	0-20 degree	0-30 degree or custom

Specification notes:

- All products are color-balanced orthomosaics.
- GSD of 15 cm uses 30 cm class native imagery with Maxar's proprietary HD technology. GSD of 30 cm uses 30 cm class native imagery and 50 cm class native imagery with HD technology.
- Vivid Basic and Standard can be resampled to lower resolutions, from 1 m to 15 m.
- Image currency reflects the image age at the time of production.

## Image layer updates

- Vivid basemaps are produced annually, with updated areas available throughout the year as they are completed.
- Dynamic basemaps are produced at the time of order, with updates available per the contract delivery schedule.

## Delivery Formats

Imagery basemap format options include:

- Cloud-optimized GeoTIFF (COG, includes JPEG compression).
- Maxar tile cache. When formatted as a tile cache, basemaps can be bundled with other basemaps.

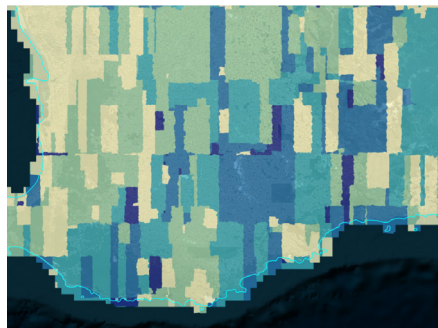
Dynamic basemaps are also available with custom formatting.

## Product files and metadata

Imagery basemap deliveries include the raster tiles, tile metadata and source image metadata (collection date, sensor, ONA, etc).

## Access

- Imagery basemap access options include AWS-S3 and FTP.
- Vivid imagery basemaps are also available in SecureWatch, using the web portal or streaming with web service APIs.



See the most current view of the ground with a Dynamic image layer (left), and the vintage map of the Dynamic image layer shows you the collection year of the images used in the imagery basemap (right).

# MAXAR